

NORTH SEA ALE

INSIDE THIS ISSUE

Festivals	3
Red Garth	4
Champion Winter Beer	5
Glass or Jug	6
Pub Designs	8
Marstons	9
Membership	10
Diary	11
Brewdog visit	13
Outlets	14
Financial Corner	17
Pub News	18
Contacts	20
Champion Cider	22

The views expressed in this publication are those of the contributors, and do not necessarily represent those of CAMRA, or of the editor

CHAMPION LOCAL PUBS

The Redgarth in Old Meldrum was voted as the local CAMRA Country POTY and went on to become overall branch winner with the Prince of Wales in Aberdeen being the City winner and runner up. Videos of presentations can be found at

<http://aberdeencamra.org.uk/honour>



Ian Chapman presents the Pub of the Year award to the
Stuart Singer of the Redgarth Old Meldrum

The Redgarth (Red House in its Garden) is an imposing property in Oldmeldrum, right in the heart of the Garioch. Built as a house in 1928, it was owned from 1961 to 1980 by local grocer, Bill Paterson. It was he who obtained its first drinks licence and the business traded under the name "The Redgarth Cocktail Bar". It changed hands three times in the eighties, with Stuart Singer eventually taking over in 1990.

Continued on page 4

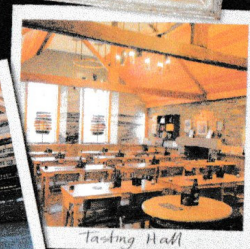
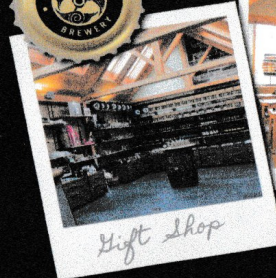


THE ORKNEY BREWERY AND VISITOR CENTRE

Open March to October for:

- Guided Brewery Tours
- Award Winning Ales
- Family Trail for Younger Guests
- Tasting Hall Café
- Brewery Shop


Private tours available
during off-season
Call 01856 841 777
for more information.



Visit Scotland
5-Star Visitor
Attraction



THE ORKNEY BREWERY, QUOYLOO, STROMNESS, KW16 3LT
www.orkneybrewery.co.uk • enquiries@orkneybrewery.co.uk
01856 841 777

 Follow us on Facebook at: www.facebook.com/orkneybrewery

WE WILL BE BACK

The Great Grampian Beer Festival will be back,

With a new city centre location and a return to our traditional autumn slot.

Watch the website

<http://www.aberdeencamra.org.uk>

For further details

Meanwhile here are details of a couple of other events that may be of interest

GREAT BRITISH BEER FESTIVAL 2017 8-12 AUGUST OLYMPIA LONDON

GET YOUR TICKETS NOW

0844 412 4640

www.gbbf.org.uk/tickets

@GBBF GreatBritishBeerFestival



CAMPAIGN
FOR
REAL ALE



* * * Scottish Real Ale Festival 2017 * * *

We will be open at the Corn Exchange Edinburgh
from Thu 6 to Sat 8 July 2017

Open from 12 noon to 10:30 pm each day

Entry - £6 or £4 for card carrying CAMRA members.

Includes one free badged glass (pint or half-pint) and a free souvenir programme

FREE admission to all subsequent sessions on presentation of your 2017 glass!

REDGARTH OLD MELDRUM



Stuart had first ventured into the ale scene in 1984, when he took over the Boar's Head in the very rural hamlet of Kinmuck, a few miles from Inverurie. His passion for ales and his cellarmanship were soon recognised and the pub was crowned the inaugural CAMRA UK Pub Of The Year (POTY) in the late eighties. He subsequently moved to the Redgarth in 1990, where he has spent the last 27 years!

Attention to detail is evident everywhere, from his new kitchen to his new Cellar, from his 6 bedrooms to his refurbished bar and dining area. Naturally his ales are always in top condition, often available on gravity.

When he was supplied by Caledonian, his three handpumps introduced his many regulars to a wide variety of ales from all corners of the UK. Nowadays he concentrates on lighter ales from Scottish micros, predominantly Swannay, Fyne and Kelburn.

Over the years he has hosted several Brewers in Residence evenings, including Inveralmond, Belhaven and Cairngorm. Beers have been launched in the Garth too, including Aberdeenshire Ales wonderfully named Buchan Bronco! The boys from Brewdog also presented their original PUNK IPA in the pub. The bar has also made it into the world of crime fiction, featuring in Stuart McBride's *Flesh House*, where the author rather cheekily refers to the "lardy patrons" at the bar. Real Ale and overweight regulars? Never.

CHAMPION WINTER BEERS

Glasses were raised to Moor Beer Company's Old Freddy Walker, at the National Winter Ale Festival in Norwich.

Bristol-based Moor Beer Company has marked the 10th anniversary of their reopening in style, with one of their brews being named CAMRA's Champion Winter Beer of Britain.

Old Freddy Walker (7.5 per cent ABV) impressed the judges in Norwich with its incredible balance of flavours, and was described as "a strong ale, with a rich flavour perfectly balanced between chocolate, honey, dark roasts and a hint of liquorice".

The Champion Winter Beer of Britain competition provides an opportunity to showcase the best traditional winter brews in the country, in categories including barley wine, strong old ales, porters and stouts.

Champion Winter Beer of Britain winners

Overall

Gold – Moor – Old Freddy Walker (Bristol)

Silver – Sulwath Brewers – Black Galloway (Dumfries & Galloway)

Bronze – Magic Rock – Dark Arts (Huddersfield)

Barley Wine, Strong Old Ales

Gold – Moor - Old Freddy Walker

Silver – Green Jack - Ripper Tripel

Bronze – Orkney - Skull Splitter

Old Ales Strong Milds

Gold – The Grainstore Brewery - Rutland Beast

Silver – Sarah Hughes - Dark Ruby Mild

Bronze – Adnams – Old Ale joint with Old Dairy Brewery - Snow Top

Porters

Gold – Sulwath Brewers - Black Galloway

Silver – Elland Brewery – 1872 Porter

Bronze – Tavy Ales - Tavy Porter

Stouts

Gold – Magic Rock – Dark Arts
Silver – London Brewing Company – 100 Oysters Stout

Bronze – Loch Lomond – Silkie Stout

GLASS OR JUG

It was almost 3 years ago when I was offered the choice.....again!

“Straight glass or jug?”

As it had been around 30 years since the jug bug seemed to have caught the licensed trade in Scotland I assumed this was a local novelty in Stirling. However, as the days and weeks went on it became apparent that, a bit like the squirrels, that the days of the lesser spotted jug were being replaced by more days of the greater spotted jug. It was also looking as if the greater spotted jug had a couple of specific habitats; namely the environs of a large pub chain and a Scottish Brewery. These two habitats both had strong connections south of the border where the home of the greater spotted jug was more established.

I suspect that the majority of CAMRA members recall the previous outbreak and since then Scotland has tended to be the land of the lesser spotted beer-jug or dimple jug to give it its Sunday name. Whilst I tend to prefer the straight-glass or nonic (to be more accurate) for those days I could see certain occasions where the dimple jug had advantages. In Summer the handle permitted the drinker to minimise contact with the beer before swallowing which would assist in keeping the beer at a more optimal temperature. Nowadays, however, many bar cellars have refrigeration systems that actually make the straight glass preferable to help bring the beer above lager temperature (at least to improve the second half). So today the choice of drinking implement is really a matter of personal preference. Sadly on certain occasions the choice is not given. I still prefer the straight glass but don't actual-

ly make too much fuss about it. If the dimple jug is proffered on the take it or leave it principle I take it and ponder whether to be a patron of the premises for another beer or leave to show I do have some principles. I wonder if I did ask for a straight glass on the second pint would there be resistance? In the one place I decided to have another beer the point was made redundant when another member of the bar-staff offered the choice and the third went straight for the straight.

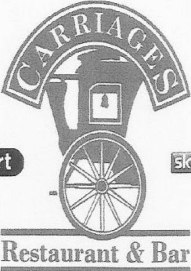
This brings us to operating policy of the facilitators of these greater spotted jug habitats. Are we, the mere customer, to be offered a choice? The previous paragraph indicates that for one facilitator there appears to be no policy. Is there a gender bias? As far as I recall the greater spotted jug is usually if not always presented by the male of the hostelry trade. Does the consumer utilise opportunities to show protest? It has occurred to me that I could bring my own drinking implement as a useful form of protest.

I have, however, worked out a way in which the greater spotted beer jug could comfortably settle in these parts. If there was a 25 fluid ounce sub-species that could present its wares at the same price as the 20 fluid ounce straight-glass I'm sure there would be much less consumer resistance. Sadly such a sub-species would probably turn out to be easy prey for the keen eyes of the weights and measures people who would swoop mercilessly on this benign example of evolution, if the accountants didn't get to them first

Rigg Robertson



George Howie awards City Pub of the Year to the Prince of Wales



BT Sport sky SPORTS

the BRENTWOOD HOTEL

101 Crown Street
Aberdeen AB11 6HH
Tel. 01224 595440

The Pub in Aberdeen for

REAL ALES

We have 8 Real Ales on tap

Our restaurant is well known for providing excellent food.
Lunch Soup & Sandwiches
12 noon to 2pm
Dinner 5.30pm to 9.00pm

We can cater for quiz nights, parties, private functions etc.

Just give us a call to discuss your requirements.

BEST PUB DESIGNS OF BRITAIN

Campaign for Real Ale has unveiled the best pub designs across Britain, which include a former strippers' pub, a 300-plus year old public house and a stunning Edwardian street corner local.

The pubs were presented with their awards at the Scottish Stores in London, which won this year's Conservation Award. The Scottish Stores, a listed Grade II building, was designed in 1900-01 when joints of deer meat used to hang from the bar to be bought by visiting Scotsmen. In the 1980s it was restyled and was



renowned as one of the last remaining strippers' pubs in London. In 2015 it was conserved back to its Jacobean-style woodwork in a splendid example of how to bring a much-loved, urban landmark back to life.

The Refurbishment and Joe Goodwin Awards have

both gone to the Tim Bobbin in Burnley, Lancashire. This handsome stone building dates by to 1701, but was insensitively restored in the 1960s, leading it to look very tired and sad by the 1990s. Now Samuel Smiths' in-house architects have rescued this prominent pub through an excellent refurbishment. The Ship Inn in Shalesmoor, Sheffield was also commended in the refurbishment category. Its interior was allowed to deteriorate after its surrounding community was bulldozed and it found itself perched on the edge of a busy road. Having been shut for many years, the pub has now been restored to its former Edwardian glitz and glitter.

Sean Murphy, CAMRA's Pub Design Awards coordinator says: "This year the judges have singled out three buildings - all of which, in their own way, point to a bright future for the traditional British pub. All three show the huge potential for restoring and preserving much-loved heritage pubs to their former glory, even after decades of change." The Pub Design Awards of 2016 aimed to find the most stunningly designed pubs in the UK. The awards, held in association with Historic England, recognise high standards of architecture in the refurbishment and the conservation of existing pubs.



MARSTONS

Major British brewing group Marston has announced a takeover of most of the business of rival Charles Wells brewing group based in Bedford for £55 million. The deal includes the existing Charles wells Eagle Brewery in Bedford, and its main brand portfolio including the Youngs, Mc'Ewans, Courage and Bombardier real ale ranges. The addition of the brands will raise Marstons share of the ale market from 11 percent to 16 percent.

cluding a new pub and hotel complex at Invernettie in Peterhead scheduled to open in July, and an outlet at Slack-buie in Inverness, which will open toward the end of the year.

The Charles Wells purchase also include international brands such as Damm, Erdinger, Estrella and Kirin.

The deal came as Marstons announced a 61 percent rise in pre tax profits to 36.7 million.

Marstons is also buying ten pubs and bars from an undisclosed national pub operator. The group intends to increase its Scottish outlets from 13 to 24 by early 2018, with openings in-

The deal does not include the chain of more than 200 pubs owned by Charles Wells. These will be supplied by a new, smaller brewery to be built in Bedford.

Join up, join in, join the campaign



You are just moments away from a year in beer heaven!

From as little as £25* today, be part of the CAMRA community and enjoy discounted entry to around 200 beer festivals, exclusive member offers and more. Discover all the ins and outs of brewing and beer with fantastic magazines and newsletters, but even more importantly support various causes and campaigns to save pubs, cut beer tax and more.

Join CAMRA today

Enter your details and complete the Direct Debit form below to get 15 months for the price of 12 for the first year and save £2 on your membership fee.

Alternatively you can send a cheque payable to CAMRA Ltd with your completed form, visit www.camra.org.uk/joinup or call **01727 798440**. All forms should be addressed to Membership Department, CAMRA, 230 Hatfield Road, St Albans, AL1 4LW.

Your details:

	Direct Debit	Non DD
Title Surname	Single Membership £25 <input type="checkbox"/>	£27 <input type="checkbox"/>
Forename(s)	(UK & EU)	
Date of Birth (dd/mm/yyyy)	Joint Membership £30.50 <input type="checkbox"/>	£32.50 <input type="checkbox"/>
Address	(Partner at the same address)	
..... Postcode		
Email address	*For information on Young Member and other concessionary rates please visit www.camra.org.uk/membership-rates or call 01727 798440 .	
Tel No(s)	I/we wish to join the Campaign for Real Ale, and agree to abide by the Memorandum and Articles of Association these are available at camra.org.uk/memorandum <input type="checkbox"/>	

Partner's Details (if Joint Membership)

Title Surname	
Forename(s)	
Date of Birth (dd/mm/yyyy)	Signed
Joint member's Email	Date
Joint member's Tel No	Applications will be processed within 21 days of receipt of this form. 04/17

Instruction to your Bank or Building Society to pay by Direct Debit		DIRECT Debit	
Please fill in the whole form using a ball point pen and send to: Campaign for Real Ale Ltd, 230 Hatfield Road St. Albans, Herts AL1 4LW		This Guarantee should be detached and retained by the payer.	
Name and full postal address of your Bank or Building Society		The Direct Debit Guarantee	
To the Manager	Bank or Building Society	• This Guarantee is offered by all banks and building societies that accept instructions to pay by Direct Debits	
Address		• If there are any changes to the amount, date or frequency of your Direct Debit the Campaign for Real Ale Ltd will notify you 10 working days in advance of your account being debited or as otherwise agreed. If you request The Campaign for Real Ale Ltd to collect a payment, confirmation of the amount and date will be given to you at the time of the request.	
Postcode		• If an error is made in the payment of your Direct Debit by The Campaign for Real Ale Ltd or your bank or building society, you are entitled to a full and immediate refund of the amount paid from your bank or building society	
Names(s) of Account Holder		• If you receive a refund you are not entitled to, you must pay it back when The Campaign Real Ale Ltd asks you to	
Bank or Building Society Account Number		• You can cancel a Direct Debit at any time by simply contacting your bank or building society. Written confirmation may be required. Please also notify us.	
Branch Sort Code			
Reference			
Banks and Building Societies may not accept Direct Debit Instructions for some types of account.			
Service User Number			
9 2 6 1 2 9			
FOR CAMRA OFFICIAL USE ONLY			
This is not part of the instruction to your Bank or Building Society			
Membership Number			
Name			
Postcode			
Instructions to your Bank or Building Society			
Please pay Campaign For Real Ale Limited Direct Debits from the account detailed on this instruction subject to the safeguards assured by the Direct Debit Guarantee. I understand that this instruction may remain with Campaign For Real Ale Limited and, if so will be passed electronically to my Bank/ Building Society.			
Signature(s)			
Date			

New Direct Debit members will receive a 12 month supply of vouchers in their first 15 months of membership

CAMRA MEMBERSHIP

CAMRA is the biggest single-issue consumer group in the UK with over 185,000 members now, having grown by almost 5% in the last year.

In Scotland, membership has grown to c. 5,500, with just over 400 based in our local Aberdeen, Grampian & Northern Isles branch. There is a large concentration of members round the Aberdeen city and suburbs area which has been hit recently by the decline in the oil industry, but we still have a substantial body of our local membership based in more distant, largely rural locations, which presents some logistical challenges.

Branch meetings are held in different locations each month and are advertised on the branch's web site (<http://aberdeencamra.org.uk/>) and in What's Brewing. We would like to encourage as many members as possible to attend these meetings and also the occasional socials, details of which are also on the web site.

Members can help the Campaign in a number of ways:

Posting beer scores on WhatPub? (<https://whatpub.com/>)

Distributing newsletters, membership forms etc

Carrying out pub surveys for CAMRA's Good Beer Guide

Voting in our annual Pub of the Year (PotY) competitions

Spread the word – we are keen for the Campaign to continue to grow and promote the cause of real ale and pubs. We are particularly keen to attract younger members and also increase the proportion of female members.

When	Where	Why
Sat 22nd July	2pm Cross Keys Peterhead	Branch Meeting
Wed 23rd Aug	7.30pm Black Bull Inverurie	Social
Sat 2nd Sept	12pm Deeside Brewery	Brewery Trip
Sat 2nd Sept	2pm Ravenswood Banchory	Branch Meeting
Wed 6th Sept	7.30pm Station,8,30 Tollbooth Ellon	Social
Tue 10th Oct	8pm Ferryhill	Branch Meeting



Midsummer
Beer Happening
Stonehaven



**Prince of Wales
Aberdeen's Premier
Real Ale Pub**

No Football

**Electronic
Music Free Zone**

**Prize Quiz
Monday
9pm**

CAMRA City Pub of the Year

**Folk
Music
Sunday
8pm**



2017

Brand New Menu

**2 Starters for £7.00
2 Steaks for £24.00
with bottle of house wine**

Great Meal Deals

8 Real Ales Available



**including Fyne Ales, Swannay,
Cromarty, Orkney, Harviestoun etc**

**7 St Nicholas Lane, Aberdeen AB10 1HF ☎(01224) 640597
E-mail - princeofwales.aberdeen@belhavenpubs.net**

BREWDOG VISIT

I suppose if there is an appropriate and smelt much better.

company to be termed Marmite they don't come much closer than a brewery. The Brewdog organisation enjoy controversy if they can get enough of their angle on the publicity to suit their own ends. The opportunity to take a tour of their Ellon plant therefore left one with mixed feelings. It is undoubtedly one of the more interesting brewery tours available; the size of the site, by far the largest I'd been on for decades, the diversity, philosophy and organisation all contributing to an experience unlikely to be repeated elsewhere.

Our guide was knowledgeable, informative and informal and took us through the potted history from the two men and a dog in their meadow mowing days to their current expansive operation and philosophy leaving us to have a look round the office area whilst she prepared the first beer stop. I was intrigued by the term other income £87000 (approx) on one balance sheet.

We then moved on to the more orthodox part of the tour going through the process whilst liberally sprinkling in the external and internal inputs to that process from suppliers, staff and the public as we made our way through a substantial site that reminded me a bit of my many previous workplaces. This one, however had much less vibration, noise

The party itself comprised a good mix of faces, familiar old some less regular old and some fresh new ones. All of whom appeared to have enjoyed the tour as we retired to the Hairy O bar for a few more substantial glasses of Brewdog's offerings. As we did so I noted the next tour group hopping and hovering around the bar area and started some mental arithmetic exercise. X number of tours at weekends, Y during the week, Z -A people each tour at £Q a skull. It actually could come to around £80000/year!

The group then rolled off back into town alighting on the Tolbooth for a few more ales. At this point they appeared to have run out of steam and imprisoned themselves in the Tolbooth whilst your humble correspondent puffed on to the Station Hotel to complete the round trip.

So to sum up the Brewdog visit it's worthwhile for the variety but in terms of value for money the Station and Tolbooth come in with a wide enough choice of beers at 50p or more a pint less to make them my more likely refreshment halts in Ellon next time round.

Rigg Robertson

Below is a list of outlets that sell real ale which are known to the Aberdeen, Grampian & Northern Isles branch of CAMRA.

CAMRA is in no way recommending all of the pubs in this list. If you want a list of recommended pubs you will need to buy the Good Beer Guide. The pubs are placed in alphabetical order by location and then pub.

If you know of any pubs that sell real ale, in our area, which are not on this list, or any pubs on this list that no longer sell real ale please contact the editor. Your help is much appreciated

New Outlet

Seasonal

Aberdeen

Aitchies Ale House

Archibald Simpson's

Atholl Hotel

Blue Lamp

Bobbin

Brewdog (Union Street)

Cameron's (Ma's)

Carriages

Dutch Mill

Ferryhill House Hotel

Ghillies Lair

Globe

Grays Inn

Grill

Howff

Illicit Still

Justice Mill

Krakatoa

Mains of Scotstown

Mariner Hotel

McGinty's

McNastys

Noose & Monkey

Northern Hotel

Number 10

Old Blackfriars

Prince Of Wales

Queen Vic

Slains Castle

St Machar Bar

Stag

Triple Kirks

Under The Hammer

Aberchirder

New Inn

Aboyne

Boat Inn

Alford

Forbes Arms

Haughton Arms

Ballater

Alexandra

Balmoral Bar

Glenaden

Balmedie

Cock and Bull

Banchory

Burnett Arms

Douglas Arms Hotel

Ravenswood Club
(British
Legion)

Scott Skinners

Tor Na Coille

Banff

Market Arms

Ship Inn

Braemar

Moorfield House Hotel

Brodie

The Old Mill

Catterline

Creel Inn

Charleston of Aberlour

Aberlour Hotel

Mash Tun

Craigellachie

Craigellachie Hotel

(Copper Dog)

Highlander Inn

Cullen

Three Kings

Cults

Cults Hotel

Daviot

Smiddy

Dufftown

Commercial

Stuart Arms

Dunecht

Jaffs

Dyce

Dyce Farm

Granite City

Spider's Web

Elgin

Drouthy Cobbler

Muckle Cross

Sunninghill Hotel

Ellon

Dog Tap

Station Hotel

Tolbooth

Fettercairn

Ramsay Arms

Findhorn

Crown & Anchor

Kimberley Inn

Fochabers

Gordon Arms Hotel

Grant Arms

Forres

Carisbrooke Hotel

Knockomie Hotel

Mosset Tavern

Ramnee Hotel

Red Lion

Fraserburgh

Elizabethan

Saltoun Arms

Garlogie

Garlogie Inn

Garmouth

Garmouth Hotel

Gourdon

Harbour

Glenlivet

Croft Inn

Huntly

Gordon Arms

Crown Bar

Inverbervie

Queens Arms

Inverurie

Black Bull

Gordon Highlander

Johnshaven

Anchor

Ship

Kingswells

Four Mile House

Village Hotel

Kinloss

Abbey Inn

Lossiemouth

Beach Bar

Skerry Brae Hotel

Luthermuir

Sauchieburn Hotel

Macduff

Old Moray

Maryculter

Maryculter House

Marykirk

Marykirk Hotel

Methlick

Ythan View

Monymusk

Grant Arms Hotel

Muir Of Fowlis

Muggarthaugh

Netherley

Lairhillock

Newburgh

Newburgh Inn

Newtonhill

Newton Arms

Oldmeldrum

Redgarth

Pennan

Pennan Inn

Peterhead

Crosskeys

Portlethen

Mains of Balgharn

Portsoy

Shore Inn

Roths

Seafield Arms

Rothiemay

Forbes Arms

Stonehaven

Belvedere

Marine Hotel

Ship Inn

Strachan

Feughsiide

213 THE GRILL 213

A real historic pub with a unique welcome



One of Aberdeen's oldest and most famous bars, with an internationally renowned whisky collection. Centrally located, close to the Theatre, Aberdeen Music Hall and many restaurants.

Opening Hours: Monday-Thursday 10.00am-Midnight, Fridays & Saturdays 10.00am-1.00am
Sunday 12.30pm-Midnight



The Grill • 213 Union Street • Aberdeen • Scotland • AB11 6BA
Tel: 01224 573530 • email: info@thegrillaberdeen.co.uk
www.thegrillaberdeen.co.uk



Strathdon

Colquhonie Hotel

Tarland

Aberdeen Arms

Commercial Arms

Tarves

Aberdeen Arms Hotel

Tomintoul

Glen Avon

Richmond

Gordons (Balfour Manor)

Westhill

Shepherds Rest

Whitehills

Seafield Arms

Orkney

Burray

Sands

Birsay

Barony

Evie

Mistra

Harray

Merkister

Holm

Commodore

Hoy

Stromabank

Kirkwall

Albert Hotel

Auld Motor Hoose

Ayre Hotel

Helgis

Orkney Hotel

Reel

Shore Inn

St Ola

Torvaugh

Ophir

Noust

Rousay

Taversoe

Stenness

Standing Stones

Stromness

Ferry

Stromness Hotel

Sanday

Kettletoft Hotel

Westray

Cleaton House

Shetland

Lerwick

Captain Flints

Scalloway

Scalloway Hotel

FINANCIAL CORNER

CAMRA MEMBERS INVESTMENT CLUB (“CMIC”)

Total funds held in breweries etc. have risen again and now stand at over £20.6m., having risen by almost 7% in the last 6 months – a period that included the initial uncertainty following the Brexit vote.

The Club organises brewery tours for the members every year, one of them overseas. The Club is open to all CAMRA members, each of whom is allowed to make monthly, quarterly or annual payments to the Club. Each member can invest a maximum of £2,000 p.a. (£166 per month). The minimum investment is just £5 per month. More details available at

<http://www.cmic.uk.com/>

Investments are currently held in the following drinks-related companies:

Adnams	Holt, JosephHop Back Brewery
Anheuser-Busch InBev	Hydes Anvil Brewery
The Beer Consortium	Marstons
Black Eagle Brewery	McMullens
Black Sheep Brewery	Mitchells & Butler
Bell & Co	NewRiver Retail
Brasserie Cantillon	Punch Taverns
Caledonia Investments	Restaurant Group
Carlsberg	Shepherd Neame
Diageo	Thwaites
Enterprise Inns	Wadworth
Fuller Smith & Turner	West Berkshire Brewery
Greene King	Wetherspoon
Heavitree Brewery	Whitbread
Heineken	Young & Co

PUB NEWS

There have been quite a few changes to the list of Real Ale outlets in the mainland area of Aberdeen City, Aberdeenshire and Moray since our last edition of North Sea Ale.

First of all the bad news! We now have a large area with no outlets in the Holburn Street area. For such a large stretch between Union Street and the Bridge of Dee to have no real ale is a disappointing situation. The Glentanar went into administration and was sold earlier this year. The pub had not stocked any ale while being run by the administrators and the new owners decided that they were not going to bother selling any. This is a shame since previous owner, Mike Taylor, was very proud of being able to sell ale and indeed was proposing to install a pump in the Inn At The Park, the other licensed premises owned by his company before going into administration. The Glentanar was also home to the local CAMRA darts team who obviously need some ale to be able to play well! The Foundry next door ceased selling ale a while back quoting poor sales as the reason. Further down the street the Adams/Hawthorn removed their ale pump and replaced it with two Drygate key-keg pumps. The removal of ales from these pubs caused us to reschedule some CAMRA branch meetings as we had planned to hold meetings in most of these three - no members are likely to stay for a meeting if they can't get a decent pint!

At the other end of Union Street, the Wig Bar & Kitchen (formerly Tilted Wig and Welly Boot) also removed their pumps after many years of selling ale stretching back to the 70s when the Boot sold Belhaven 80/-. Six Degrees North in Littlejohn Street has now also ceased selling the real stuff. Probably not too surprising with the enormous range of Belgian and other 'craft' brews from all over. Most times we have held socials there, no others are usually drinking the real stuff - shame really.

Outwith the city, there have been a few other losses. Edwards in Inverurie removed the pumps a few months ago, leaving only two outlets in the town (Black Bull and Gordon Highlander). In Lossiemouth the Clifton, a favourite back in the 80s when Harry Halkett ran it (more of him later), has undergone a few re-furbishments, the latest of which moved the bar to the other side of the area, restricting its size, so it is more of a restaurant bar and it has definitely gone up-market. Also the Coulhard Inn has also removed its pump and replaced it with keg served Windswept Wolf. Half of the Lossie outlets are no more. In Dufftown, the Royal Oak underwent a refurb and on reopening as the Seven Stills, has no longer any real ale, leaving only the Commercial Hotel and the Stuart Arms

selling the real stuff.

And now the good news! The Three Kings in Cullen reopened in April. The owner, Campbell Sime, had hoped to retire and put the pub up for sale last year but, after failing to sell it, decided to open the pub again and is selling ale. No meals anymore but still doing accommodation. The Newton Arms in Newtonhill is once more selling the real stuff although there have been no reports as to which varieties are available. Information on this would be appreciated and may be sent via the WhatPub feedback link. The Crown Bar in Huntly has been taken over by Harry Halkett, late of the Clifton Bar, Lossiemouth and the now gone Imperial Bar in Elgin. It is currently selling Wind-swept Blonde and Wolf and has added Wrye Keith from the Keith Brewery. The beers are served on the key-cask system. He intends to refurbish the lounge but the public bar, with its magnificent

McEwans mirror, will remain untouched.

Unfortunately we seem to have lost more outlets than we have gained. Some are due to the so-called craft beer resurgence with many of these replacing handpumps and not able to be classified as Real Ale. Others are due to poor sales in difficult times and some pubs may not have staff who are enthusiastic and dedicated to putting in the extra work required to keep ales in peak condition.

The Queen Vic in Rosemount, now with four ale pumps, and McGintys at the west end of Union Street, recently had their permitted hours extended to 1am on Friday and Saturday nights.

Brewdog on Union Street has applied to create an outdoor drinking area with pavement tables.

Brewdog in Gallowgate is in discussions with the council after removing its disabled toilet.



Presentation of the Club of the year award to the Ravenswood, Banchory

Contacts
Editor /Chairman
Ian Chapman
3 Morningside Crescent
Aberdeen
AB10 7NW
01224 310188
ian.chapman7@yahoo.co.uk

Website
http://
www.aberdeencamra.org.uk
CAMRA_ABERDEEN@yahoogroups.com

Advertising
George Howie
48 Esslemont Avenue
Aberdeen
AB25 1SQ
Email dodhowie@aol.com
01224 624652
Advertising Rates
1/4 page £25
1/2 page £45
Full page £80
Back Page Full £90

TRADING STANDARDS
DEPARTMENT
Business Hub 15
Third Floor South
Marischal College
Broad Street, Aberdeen
AB10 1AB
Fax: 01224 523887
Tel 01224 523738
232 High Street Elgin
01343 541 202
10 Commerce Street
Fraserburgh
01346 510505





**FRESH LOCAL FISH
AND SEAFOOD OUR
SPECIALITY**

**TRADITIONAL HOME
COOKING USING THE
FINEST LOCAL
PRODUCE**

**PICTURESQUE
HARBOUR-SIDE
LOCATION WITH
OPEN-AIR TERRACE**

**REAL ALES
FINE WINES
OVER 100 MALT
WHISKIES**

ENSUITE BEDROOMS

www.shipinnstonehaven.com

CHAMPION CIDER & PERRY

Cider and perry lovers rejoice: the Campaign for Real Ale has scoured the length and breadth of the nation to find the best out there so you don't have to. After more than a year of local tasting panels and regional heats (good job, if you can get it), the National Cider and Perry Championships named the top of the crop at the Reading Beer and Cider Festival.

Countryman, Medium was a big winner, taking home the Gold in the cider category after impressing judges with its floral aroma, pleasant sharpness and refreshing taste.

Nempnett, Piglet's Perry scooped Gold in the perry category, with judges remarking that it had a well-balanced sweet taste with a dry finish.

'Speaking after the big win, Keith Balch of Nempnett said: 'We're delighted to hear that we've won Gold, it's absolutely brilliant. This is the big award that everyone wants to win.'

Cider

Gold – Countryman, Medium (Devon)

Silver – Salt Hill, Autumn Gold (Berkshire)

Bronze – Gwatkin's, Captain Gwatkin's Rum Cask (Herefordshire)

Perry

Gold – Nempnett, Piglet's Perry (Somerset)

Silver – Waulkmill, Mooseheid Perry (Dumfriesshire)

Bronze – Hartland, Perry (Gloucestershire)

BREWDOG

Brewdog increased its worldwide turnover by 61 percent to £72million in 2016. UK sales jumped 97 percent. The company shipped 65 million bottles and produced 131,000 barrels of beer. It has plans for expansion into the Far East, and a craft beer themed hotel in the United States.

Did You Know

Britain's first canned beer was produced in 1935 by the Felinfoel Brewery in Llanelli, using crown capped cans lined with wax.

The brewery owner also owned the local tinplate works.



BEER | GIN | PROSECCO

CRAFT DRINKS LIVE MUSIC GREAT FOOD

**FRIDAY 4TH AND
SATURDAY 5TH AUGUST,
HAZLEHEAD PARK,
ABERDEEN**

The countdown is on to Aberdeen's very first outdoor craft drinks and music gathering. Don't miss out – tickets are available from our website now!

SESSIONSFESTIVAL.CO.UK

DRINK-IN THE FRESH AIR AND FINE BEERS AT

platform 22

café~ brewery

TORPHINS

TEAS & COFFEES FROM AROUND THE WORLD
LUXURY BELGIAN HOT CHOCOLATE
CAKES & BAKES FOR ALL TASTES
REAL ALES BREWED ON-SITE
BEER GARDEN & BOULES!



OPEN MON - SAT: 10 AM TO 5 PM, SUN: NOON TO 5 PM

now pouring:

Tap 1 - Intergalactic Lager
Tap 2 - Aspell Cider
Tap 3 - Chavin Awa Porter
Tap 4 - Big Bang IPA
Tap 5 - Espresso Stout



our own bottle conditioned ales
Hairst Wyn 10.5% abv Warlock Old Ale 9.5% abv
Sputnik Hybrid Ale 4.9% abv Corennie Red Ale 4.5% abv

coming soon
beers from:

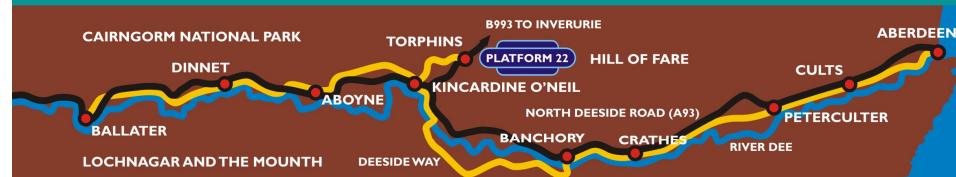
Five Points
Partizan
Magic Rock
Thornbridge



FOLLOW US ON FACEBOOK FOR UP TO DATE LISTINGS

4-PINT CARRY KEGS TO TAKE AWAY

WOOF & BREW BEER AND PAWSECCO FOR DOGS



AT THE HEART OF DEESIDE - 202 BUS ROUTE FROM ABERDEEN

22 Station Road, Torphins, AB31 4JF ~ tel: 01339882807 ~ email: mail@platform22.co.uk